

Software Sustainability Education  
Governance Impact Science  
**Working towards Sustainable Software for Science**  
Careers **Practice and Experiences** Incentives  
Training Research WSSSPE Communities  
Development Policy Reuse Engineering

# **Lightning Talk: The Science Gateways Community Institute – Supporting Communities to Achieve Sustainability for Their Science Gateways**

**Sandra Gesing**, Maytal Dahan, Linda B. Hayden,  
Katherine Lawrence, Suresh Marru, Marlon Pierce,  
Nancy Wilkins-Diehr and Michael Zentner

<http://sciencegateways.org/>

**12 September 2016**

**Science  
Gateways**



# What are science gateways?

## Why are they important?

- Increased complexity of
  - today's research questions
  - hardware and software
  - skills required
- Greater need for openness and reproducibility
  - Science increasingly driving policy questions
- Opportunity to integrate research with teaching
  - Better workforce preparation

*We need end-to-end solutions that provide **broad access** to advanced resources and allow **all** to tackle today's challenging science questions.*

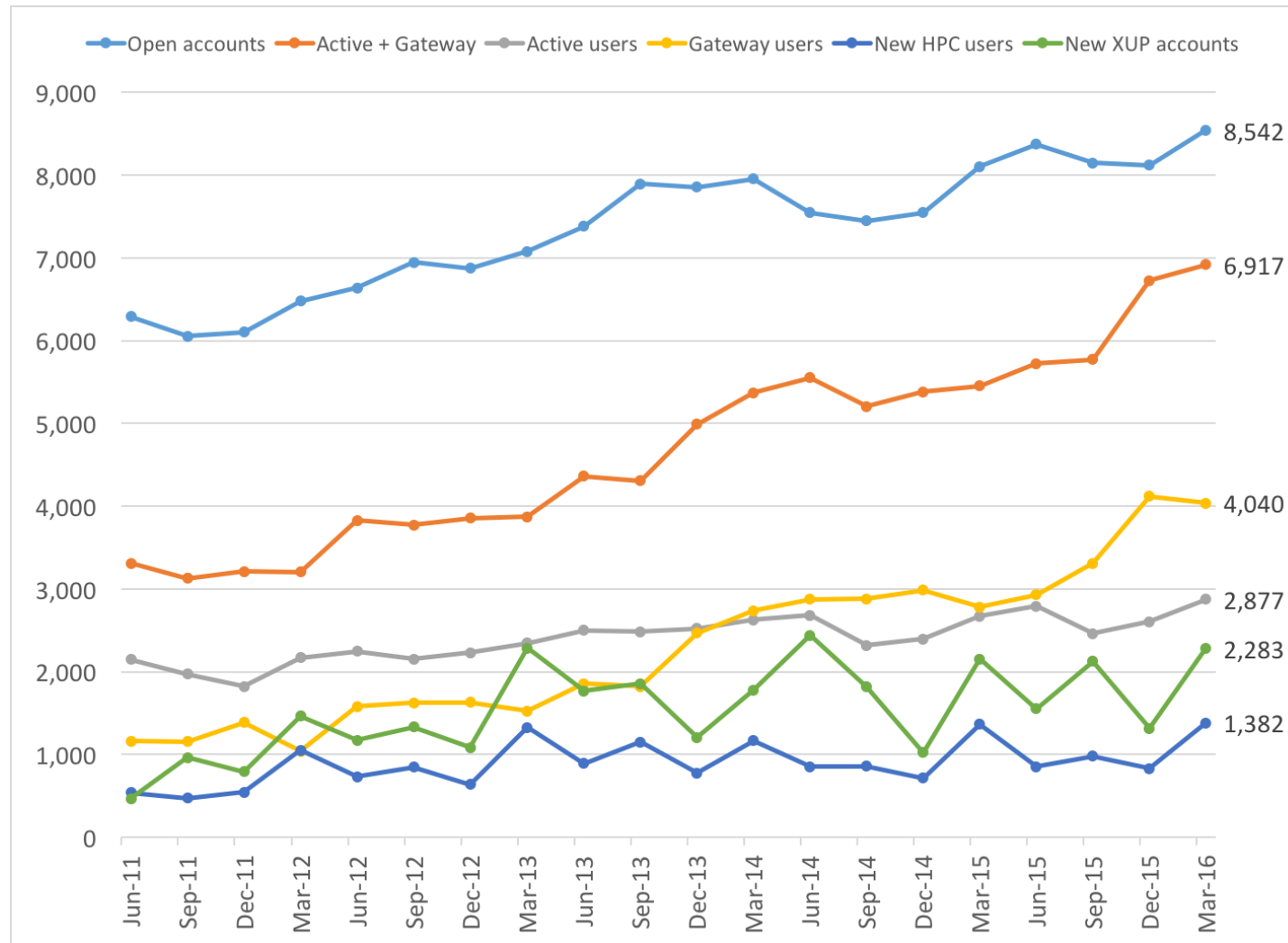
**Science  
Gateways**



# Significant developments in XSEDE as well

## Gateway users surpass login users in 2013

### Increase in 2015 due to automated user-counting

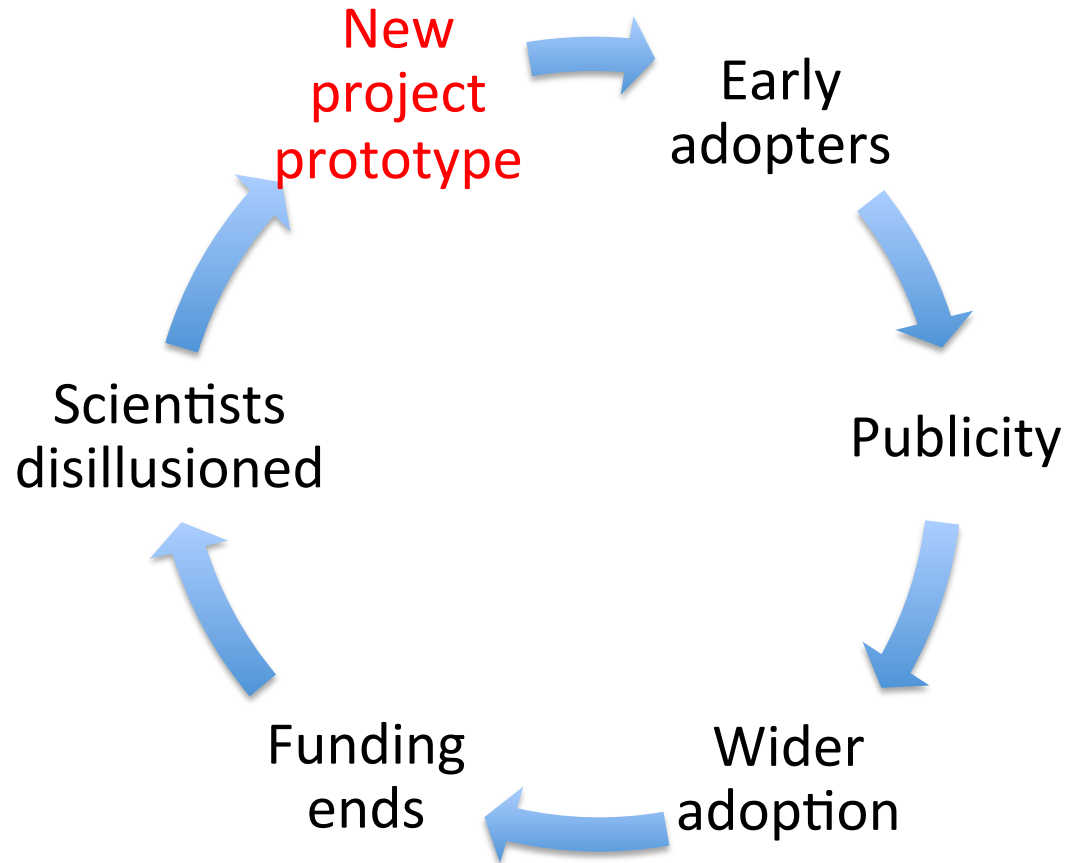


Gateways

Login



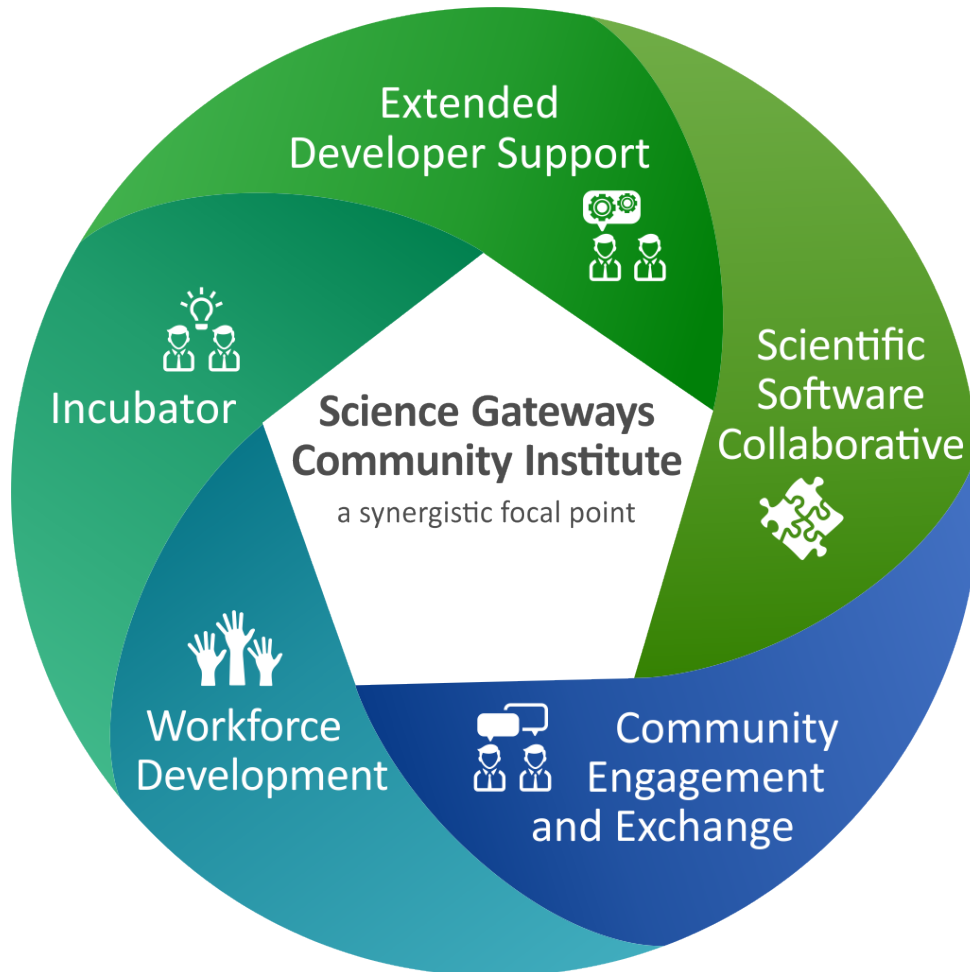
# A Typical Life Cycle of a Science Gateway



Gateways enable research, but are not research projects themselves



# The Science Gateways Community Institute

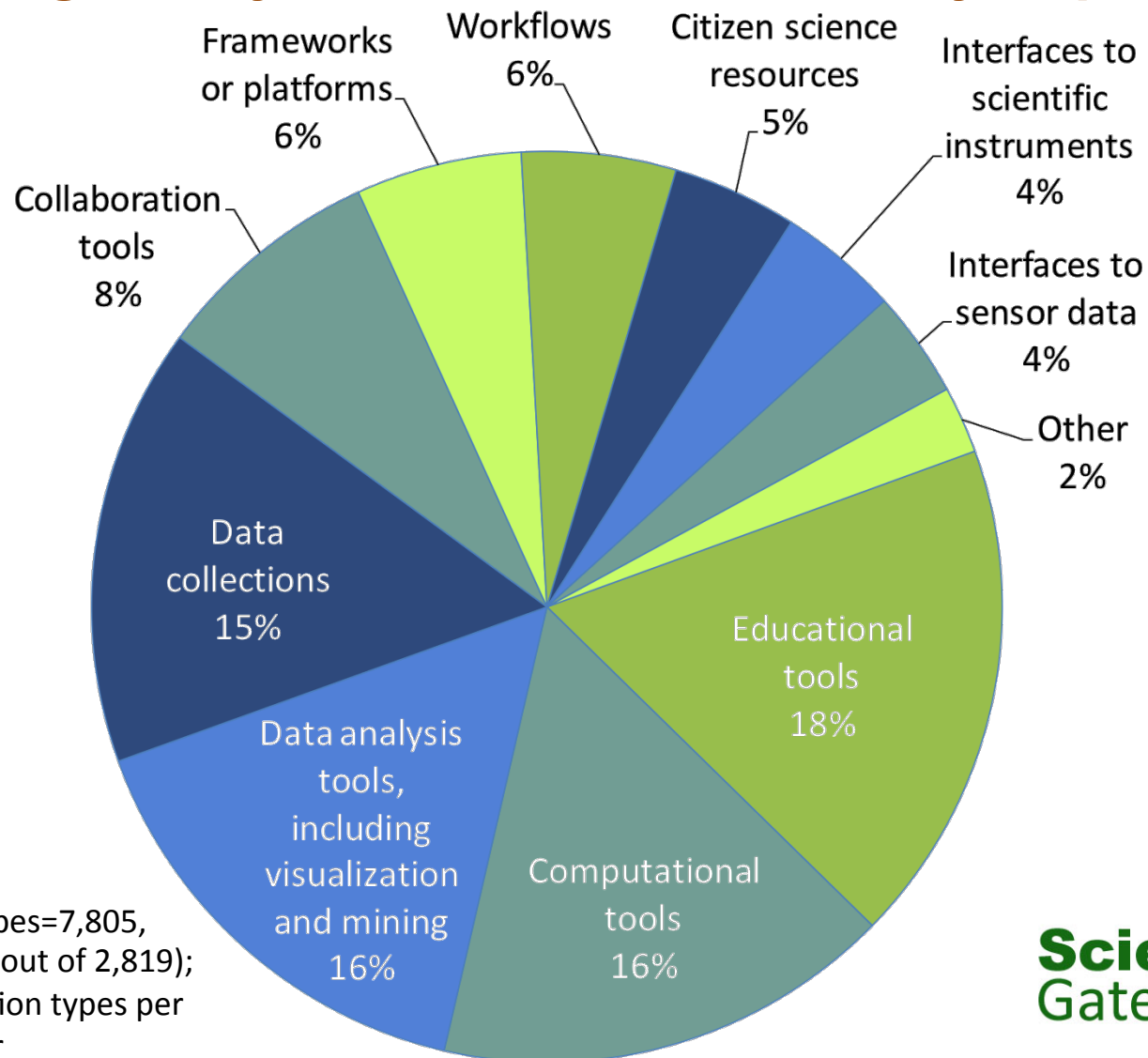


- Diverse expertise on demand
- Longer term support engagements
- Software and visibility for gateways
- Information exchange in a community environment
- Student opportunities and more stable career paths

**Science  
Gateways**



# 57% played some role in gateway creation and these gateways were used for a variety of purposes

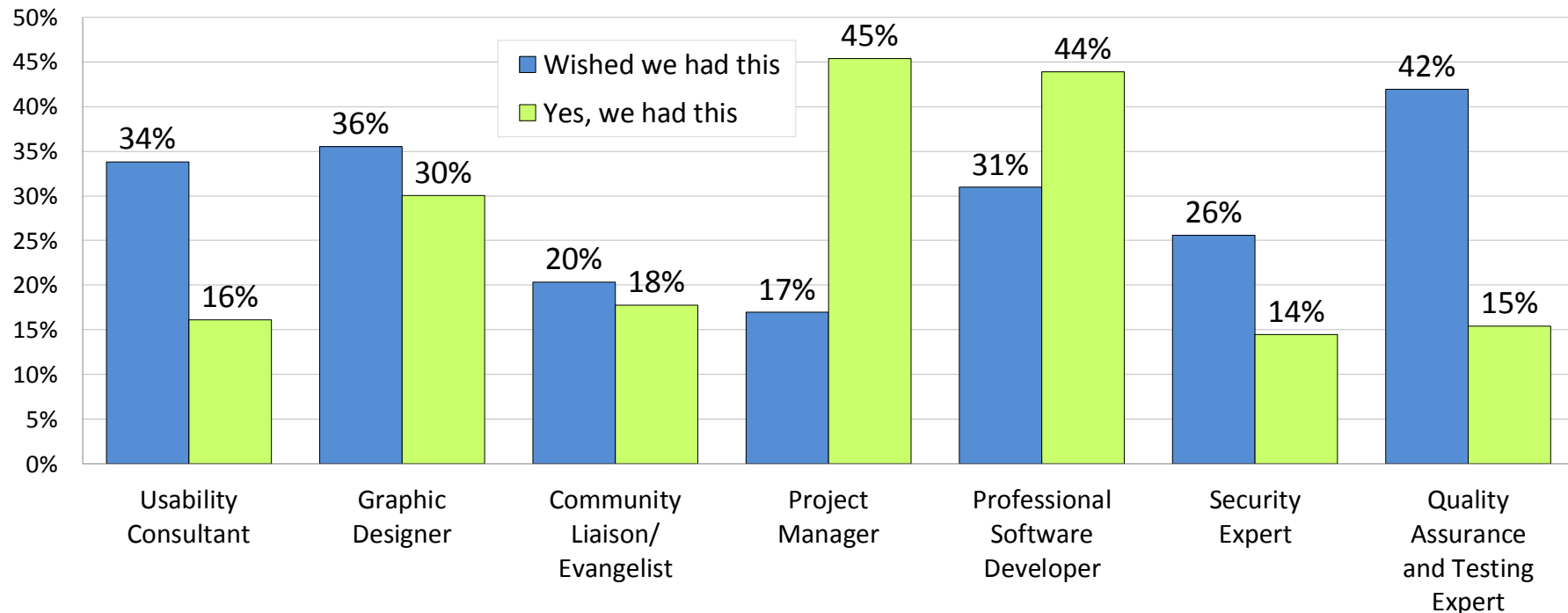


n of application types=7,805,  
by 2,756 creators (out of 2,819);  
mean=2.8 application types per  
application creator

**Science  
Gateways**



# Well-designed gateways require a variety of expertise



n=2,756 respondents or 98% of application creators

**Science  
Gateways**



Software Sustainability Education  
Governance Impact Science  
**Working towards Sustainable Software for Science**  
Careers **Practice and Experiences** Incentives  
Training Research WSSSPE Communities  
Development Policy Reuse Engineering

# Thanks for your attention!

<http://sciencegateways.org/>

12 September 2016

**Science**  
Gateways

